



# BUSINESS PROCESS OUTSOURCING

[Click here for Aruvwi FinCorp Overview](#)

# WHY ARUVWI TECHNO BPO

We are the fastest growing Business process outsourcing organization who provides outsourcing solutions to the client, end user satisfaction to their customers, and creating a huge employment. We wish our people should worked in their states and as an organization we are really happy to creating a huge employment opportunity to our people within the region. In coming days we are hiring at least 100 to 250 employees in near future, we understand the need of each & every employees, hence we believe in equal opportunity and no discrimination.

We are equipped with latest technologies to power our services and to support all the members of our company so they can develer higher work efficiency to our clients at the most costs efficient pricing globally. What makes us unique is that we actually deliver what we say and then sum! We take pride in our work making our focus all about deliverables and performances. Our goal is become a trusted advisor for our clients providing measurable and sustainable value over for long-term mutually beneficial relationship.

## Latest IT'S Infrastructure

The IT peripherals are of latest technology and are equipped with complementary devices to support the most effective efficiency that can be delivered at a present time

## Cost efficiency- effective

We will be operating at the most cost effective operations operational costs at global stage because of harnessing the workforce from non-metro township and directly from educational institute's.

## Board of Advisors

We have proposed board of advisors to support on operations and future strategies by the highly reputed professionals from relevant Industry to support Aruvwi Techno BPO

## Geographical Advantage

By having our operations running at one of the most prime location in the city the Aruvwi Techno BPO will be having the superior advantage because of its Geographical vicinity



connecting networks

ARUVWI TECHNO

## OUR INVESTMENT

**People Training:** A lots of people think training is organization coast but we believe that, it's an investment amount which organization investing to our people for their growth, skills, personality development and learning about the Business process outsourcing skills & management.

**Infrastructure:** Any organization business is depends on the IT Infrastructure and we have developed operation floor and cafeteria at centrally located premises

**Employee Benefits:** We are providing international standard's of work culture and employees policies and to all the member's

**IT Infrastructure:** We have state of art IT Infrastructure supporting hot seats.



**High Returns With  
Low Risk is the Key.**



connecting networks

**ARUVWI TECHNO**

## SERVICES OFFERING



connecting networks

# ARUVWI TECHNO

# Aruvwi FinCorp Overview

The image features the Aruvwi FinCorp logo at the top center, which consists of a stylized globe icon with a red top and green bottom, and the text "connecting networks" below it. To the left of the logo, the text "FINANCE CORPORATION" is written in green. Below the logo, the company name "ARUVWI FINCORP" is displayed in large, bold letters, with "ARUVWI" in green and "FINCORP" in red.

The main content of the image is a diagram illustrating the company's financial processes. It features three central, downward-pointing arrow-shaped boxes. The leftmost box is dark red and contains the text "COLLECTIONS PROCESS" in white, with a circular icon below it showing a hand holding a stack of coins. The top-right box is green and contains the text "ACCOUNT RECEIVABLE" in white, with a circular icon below it showing a hand holding a banknote. The bottom-center box is green and contains the text "ACCOUNT PAYABLE" in white, with a circular icon below it showing a hand holding a check.

The background of the diagram is a light gray grid pattern. At the bottom of the image, there is a photograph of a person's hands working at a desk. One hand is using a silver calculator, and the other is holding a pen over a document. The document contains various financial charts, including a bar chart with blue and green bars, a pie chart, and a line graph. The overall color scheme is green and red, consistent with the company's branding.



India's fastest growing financial service provider

ARUVWI FINCORP was established in the year 2003 by a group of working professionals who banded together to channel their individual experience and expertise in the fast moving consumer goods industry. The consultancy was steeped in knowledge in the realm of talent acquisition, training, marketing and distributorship. At first, the organization offered its services to a variety of FMCG clientele and as the market evolved, so did ARUVWI FINCORP.

In a span of two decades, ARUVWI FINCORP has played its part as a regional powerhouse whose distributorship spanned large scale retail formats, telecommunications and has now consolidated this expertise in to financial products. ARUVWI FINCORP is currently India's fastest growing loan consultancy and enjoys working with a plethora of financial institutions and other non-banking financial companies. In the years to come, its position as a distributor of financial products will be undisputed.

**SERVICES**

Financial Products Service Partner

ARUVWI FINCORP is affiliated with 36 banks and 28 NBFCs as a financial distributor. The organization is present at 156 locations and the aim is to double that well before 2020. With over 7,700 affiliates, 200 full-time resources, the organization's penetration at a mandal level makes them a powerful ally partner for every financial institution.

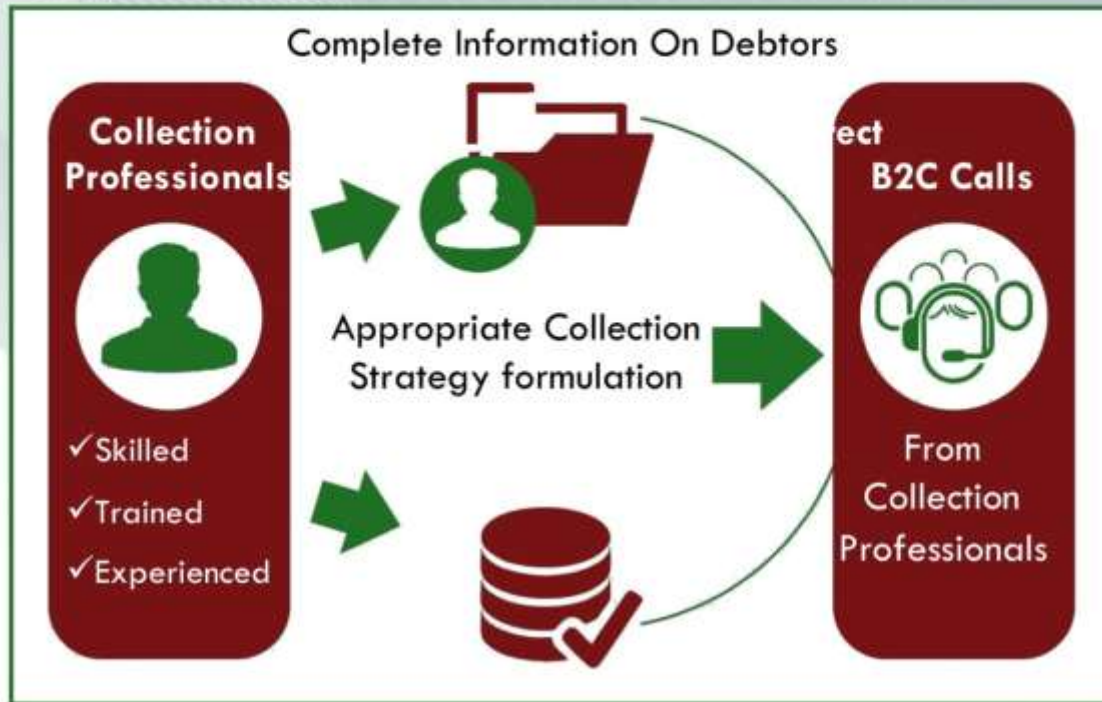


Services Your Business Need...

OUR BANKING PARTNERS



## COLLECTION PROCESS



We have experienced debt  
Collection process agents

Generation of weekly  
or monthly report



connecting networks

ARUVWI TECHNO





# ACCOUNT RECEIVABLE PROCESS



connecting networks

## ARUVWI TECHNO

Financial  
Account



They summaries what is involved in the AR Process at a high level.

Account  
Receivable



Processing Decompositions Are The Starting Point For Our Process Documentation.

Master  
Data  
Credit  
Management

Invoice  
Processing

Cash  
Receipting  
Payments

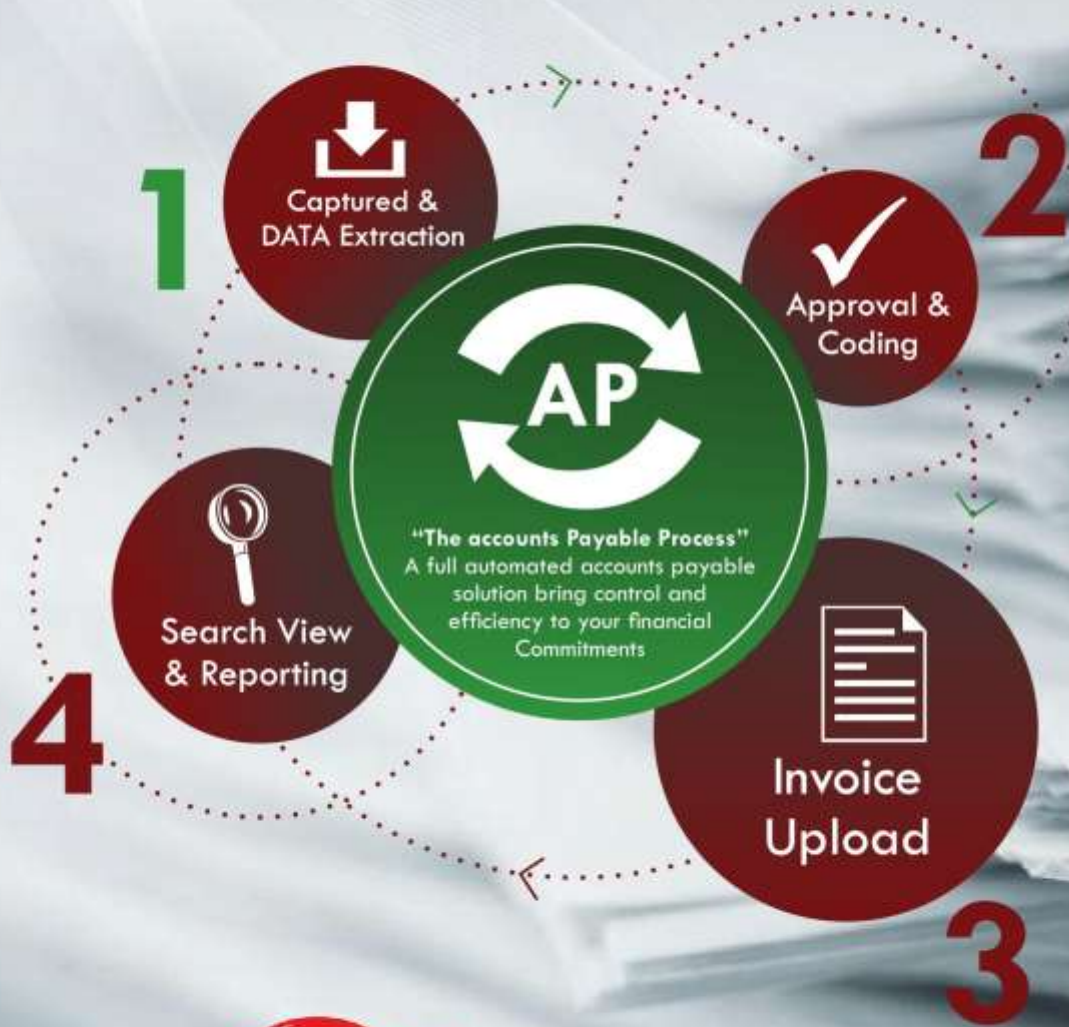
Account  
Analysis &  
Reconciliation

Periodic  
Processing

Reporting



# ACCOUNT PAYABLE



connecting networks

ARUVWI TECHNO

## TELEMARKETING PROCESS



connecting networks

# ARUVWI TECHNO

## ONLINE SURVEY PROCESS

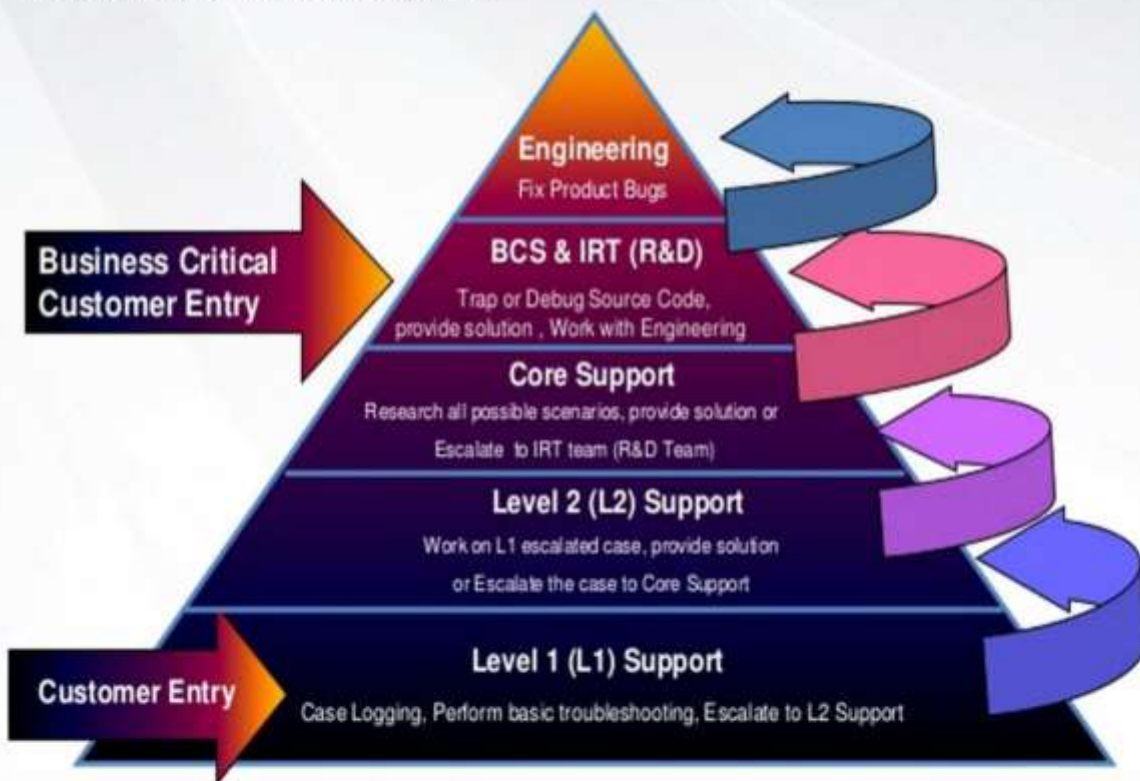


connecting networks

# ARUVWI TECHNO

## TECH SUPPORT - L1 & L2

This support level receives inbound requests through channels like phone, Web forms, email, chat, or other means based on the documented agreement with the Client. L1 support typically includes individuals that have very limited technical expertise. L1 support logs, categorizes, prioritizes, tracks, and routes (i) incidents reported by users or (ii) alarms raised by monitoring tools. L1 is intended to be the first to acknowledge an incident. L1 support tracks tickets until successfully resolved. L1 engineers can implement basic, documented break-fix tasks along the lines of following a cookbook recipe. L1 personnel will typically escalate to an L2 resource and follow documented escalation procedures once again...



connecting networks

ARUVWI TECHNO  PROBLEM

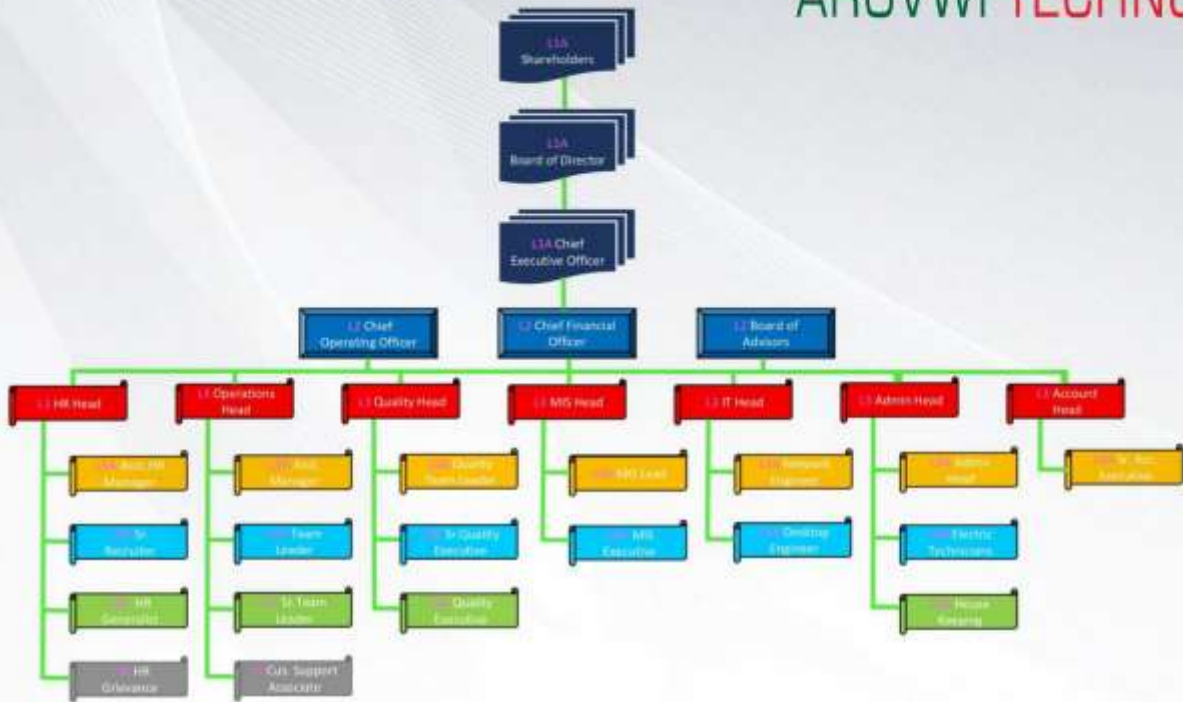


# ORGANIZATION BAND STRUCTURE



connecting networks

## ARUVWI TECHNO



## INFRASTRUCTURE



connecting networks

**ARUVWI TECHNO**  
**Complete BPO**

Services Your Business Need...





connecting networks

# ARUVWI TECHNO

## CONTACT US

Aruvwi Techno,  
Pooja Garden, Sitra  
Coimbatore-641014

Dinesh Kumar . T  
C.E.O

Mobile: +91 9600750301

e-mail : [info@aruvwitechno.co.in](mailto:info@aruvwitechno.co.in)

Calls are Served  
with a smile.

